

花醉 北海道

7D
5N

FLORAL HOKKAIDO

登別 | 洞爺湖 | 富良野 | 札幌

NOBORIBETSU | LAKE TOYA | FURANO | SAPPORO

JPHFN07



1 吉隆坡 ✕ 羽田

于吉隆坡国际机场集合办理登记手续，然后乘搭飞机飞往日本。
抵达羽田机场后，转运至机场酒店休息。

2 羽田 ✕ 千岁 - 82公里 - 登别

伊达时代村

踏进这座主题公园，犹如穿越时空进入日本江户时代。您可以欣赏富有江户情趣的平民居住区，以及豪华壮丽的武士住宅等木制建筑。

登别地狱谷

这里每分钟涌出三千公升温泉水，直径长达450米，冒着滚滚白烟。从观光步道可近距离看到间歇泉和滚烫的泉水。

3 登别 - 37公里 - 洞爷湖 - 202公里 - 美瑛

昭和新山（拍照留念）

为昭和初年所爆发的活火山，故而得名。它被归类为世界上罕见的岩塔型火山，在红褐色的山脉中仍能见到地热白烟喷出。

熊牧场

熊牧场内居住大约 100 只纯种北海道棕熊。您可以购买苹果或饼干喂食棕熊。

有珠山

登上有珠山登山缆车开往有珠山山顶时，您可以直接眺望有珠山美丽的景色。

洞爷湖

它是一座火山口湖，亦是不冻湖。即使在冬天，湖面也不会冻结。

体验摘水果乐

体验现摘现吃当季的新鲜水果。（视水果季节而定）

食品样品DIY

让您学习制作漂亮的食品样本，如：生菜、天妇罗等。

4 美瑛 - 75公里 - 富良野 - 113公里 - 札幌

富良野

富田农场是观赏薰衣草的绝佳之地。这里位于十胜山脉，景色壮丽，让人流连忘返。您可以各季欣赏到各种绚丽多彩的花朵，包括薰衣草、向日葵、百合和鼠尾草。

赠送神秘小礼物

青池

奇特的蓝色水池与枯萎的落叶松一起构成了绝妙的风景。

美瑛四季彩

美绝美伦的田园小镇，以美丽的田园风光见称，漫步在坡道起伏的山丘上，犹如走入日剧的场景一般。

5 札幌 - 38公里 - 小樽 - 38公里 - 札幌

小樽运河

曾经是小樽港口运输区，如今已转型成观光景点区，是小樽市最著名的地标。

小樽步行街

结合漫步、选购精品和品尝甜点的好地方。这里涵盖著名的北一哨子玻璃饰品专卖地，音乐盒博物馆、美术馆、咖啡厅、冰淇淋和甜点店。

狸小路

札幌市著名的购物街，拥有超过150家的店铺，包括饮食、服饰、药妆、土产店等等。途经北海道最大的不夜城——蒲夜不夜天。

6 千岁 ✕ 羽田 ✕ 吉隆坡

大通公园

这里也被称为办公楼街区中的绿洲，是一个让市民放松身心的场所。在这里一年四季都会举行北海道节庆活动，宏伟的札幌电视塔也坐落在此。

北海道神宫

北海道最具代表性，并且是规模最大的神宫。

北海道啤酒厂

向导将陪同您游览不同啤酒原料的展览和参观生产过程，最后品尝朝日啤酒。

三井奥特莱斯购物中心

除了国际品牌以外还有许多日本本土品牌进驻，不定期还有超值的促销活动。

中转羽田机场飞往吉隆坡。

今天，我们将乘搭当日班机返回家园。

7 抵达吉隆坡

※ 行程可能会以最终确定的航班而前后调动。



小樽运河 / Otaru Canal

1 KUALA LUMPUR ✈ HANEDA

Assemble at Kuala Lumpur International Airport for departure flight to Japan. Transfer to hotel for rest after arrival Haneda airport.

2 HANEDA ✈ CHITOSE – 82km – NOBORIBETSU

📍 Date Jidaimura

A historic theme park highlighting the Edo Period, one of the most attractive eras in Japanese history. Admire the residential area with wooden buildings and luxurious residence of samurai commander.

📍 Jigokudani

With a diameter of about 450 meters, 3 thousand litres of spring water gush out every minute from the crater. Along the valley, you can have a close-up view of hot steam vents and sulfurous streams.

3 NOBORIBETSU – 37km – LAKE TOYA – 202km – BIBAI

📍 Mount Showa (Photo Stop)

It is named after the active volcano that erupted in the early Showa era. It is classified as a rare rock tower volcano in the world, and geothermal white smoke can still be seen in the reddish-brown mountains.

📍 Bear Ranch

About 100 purebred Hokkaido brown bears live in the bear ranch. You can buy apples or biscuits to feed the bears.

📍 Mount Uzusan

When boarding the **Mount Uzusan cable car** to the top, you can directly look at the beautiful scenery of Mount Uzusan.

📍 Lake Toya

Japan's 3rd largest volcanic caldera lake. This lake never freezes, even in winter when the temperature falls quite drastically.

📍 Fruit Picking Activities

Enjoy Fruit Picking Activities in a local fruit farm.
(Subject to fruits seasonality)

📍 Food Sample Replica DIY

Experience yourself in the making of food replicas such as lettuce, tempura, or others.

4 BIBAI – 75km – FURANO – 113km – SAPPORO

📍 Furano

Tomita Farm Is an excellent place to admire lavender. Located in the Tokachi Mountains, the scenery is magnificent and captivating. Visitors can enjoy a variety of colorful flowers throughout the seasons, including lavender, sunflowers, lilies, and sage.

📍 Mystery gift

📍 Blue Pond

The peculiar blue pools together with the withered larches make a wonderful scenery.

📍 Biei Shikisai No Oka

A small town surrounded by picturesque landscape of gently rolling hills and vast fields. Walk on the undulating hills as if you are walking into a Japanese drama scene.



水果园 / Fruit farm

5 SAPPORO – 38km – OTARU – 38km – SAPPORO

📍 Otaru Canal

It used to be a transportation hub, but now it has transformed into a tourist attraction and landmark of Otaru.

📍 Otaru Handicraft Street

A perfect place for a stroll, souvenir shopping and to satisfy your sweet tooth! Renowned for its glass handicrafts, music box museum, art gallery, ice-cream & dessert shops.

📍 Tanukikoji Shopping Arcade

Have fun shopping here with more than 150 shops ranging from souvenirs, clothing, cafes, and snacks. Drive pass **Susukino**, Sapporo's most famous nightlife and entertainment area.

6 CHITOSE ✈ HANEDA ✈ KUALA LUMPUR

📍 Odori Park

Located in the heart of Sapporo, it is the popular venue for various festivals throughout the year. The 147.2 meters high **Sapporo TV Tower** is an attractive landmark of the park.

📍 Hokkaido Shrine

The most popular and largest shrine in Hokkaido.

📍 Hokkaido Beer Factory

The guide will accompany you to visit the exhibition of different beer raw materials and the production process, and taste Asahi beer at the end.

📍 Mitsui Outlet Mall

Besides international brand, you can find local Japanese brand as well. From time to time, there will be added value promotions!

Transit from Haneda Airport to Kuala Lumpur.

Proceed to airport for your flight back home and big farewell to Japan.

7 ARRIVAL KUALA LUMPUR

※ Sequence of the itinerary is subject to change according to the final flight confirmation.



北海道哈密瓜
Hokkaido Honey Melon



行程亮点 HIGHLIGHT

- 温泉体验
- 采摘当季水果
- 食品样品DIY
- 伊达时代村
- 登别地狱谷
- 昭和新山
- 熊牧场
- 有珠山
- 洞爷湖
- 富田农场

- 青池
- 美瑛四季彩
- 小樽运河
- 小樽步行街
- 狸小路
- 大通公园
- 北海道神宫
- 北海道啤酒厂
- 三井奥特莱斯购物中心

- Onsen Experience
- Seasonal Fruit Picking
- Food Sample Replica DIY
- Date Jidaimura
- Jigokudani
- Mount Showa
- Bear Ranch
- Mount Uzan
- Lake Toya
- Tomita Farm

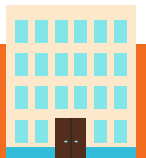
- Blue Pond
- Biei Shikisai No Oka
- Otaru Canal
- Otaru Handicraft Street
- Tanukikoji Shopping Arcade
- Odori Park
- Hokkaido Shrine
- Hokkaido Beer Factory
- Mitsui Outlet Mall



美食 GOURMET

酒店自助餐 / 日式套餐 / 日式烤鱼套餐 / 三大北海道螃蟹任吃

Hotel Buffet / Japanese Set / Japanese Grill Fish Set / 3 Kind Hokkaido Crab & Buffet



酒店 HOTEL

			早餐 Breakfast	午餐 Lunch	晚餐 Dinner
D1	羽田机场 (1晚) Haneda airport (1 Night)	JAL羽田机场酒店或同级 JAL City Hotel Haneda or similar	-	-	机上用餐 Meal on Board
D2	登别 (1晚) Noboribetsu (1 Night)	雅亭公园酒店或同级 Park Hotel Miyabitei or similar	酒店 Hotel	✓	✓
D3	美呗 (1晚) Bibai (1 Night)	美呗酒店或同级 Bibai Hotel or similar	酒店 Hotel	✓	✓
D4	札幌 (2晚) Sapporo (2 Nights)	札幌东急REI酒店或同级 Sapporo Tokyu Rei Hotel or similar	酒店 Hotel	✓	✓
D5			酒店 Hotel	✓	✓
D6	-	-	酒店 Hotel	✓	X
D7	-	-	机上用餐 Meal on Board	-	-



登别地狱谷 / Jigokudani



三大北海道螃蟹任吃 /
3 Kind Hokkaido Crab & Buffet



青池 / Blue Pond

旅行必备:

护照或签证 - 团员有责任确保护照有效期需至少6个月(从返程日期算起), 并且取得必要的签证和准证。
旅游保险 - 出发前, 建议您购买全面的旅游保险。

条款:

1. 行程、膳食、酒店住宿和交通可能会有所变动, 恕不另行通知。
2. 若出现无法预测的特殊情况特别是在旅游旺季期间, UVSB将保留更改或取消行程的权利。
3. 若UVSB的宣传手册或任何传播媒介, 出现任何形式的印刷失误或遗漏, 本公司一概不负责, 并且保留更正的权利。
4. 每位参与UVSB团的成员, 必须为自身安全或行为负责。若出现无法预测的特殊情况 (例如: 交通延误/取消、疾病、天气、示威、战争等等), 因而引发额外支出的问题, UVSB一概不负责, 旅客需自行负责额外的费用。
5. 详情条款, 请参阅单据背面或浏览 <https://ubingo.my/home/terms.php>
6. 以上图片仅供参考, 请以实物为准。

备注: UVSB为UbinGO Vacations Sdn Bhd.

日本团 - 附加条款:

1. 所有行程以中文讲解为主。若有需要, 将提供简单的英语翻译。
2. 如预定三人间, 提供的额外床垫为滚动式折叠床。
3. 团费仅适用于大马公民, 外国公民则需缴付额外费用。

Tentative Flight Details - Subject to Change

Travel Essentials:

Passport & Visas - Each tour member is responsible to ensure their passport is valid for at least six (6) months from the return date of the trip and all necessary visas and permits have been acquired.

Travel Insurance - It's essential that you take out comprehensive travel insurance before travel.

Terms & Conditions:

1. Itineraries, meals, hotels, and transportation are subject to change without prior notice.
2. UVSB reserves the right to make changes to or cancel the itinerary at any time due to unforeseen circumstances, especially during peak periods or in the event of a force majeure.
3. UVSB is not responsible for omissions, printing and/or presentation errors in brochures or in any media where such information may be presented; UVSB reserves the right to make corrections as required.
4. Every person participating in UVSB's tours shall travel at his/her own risk. UVSB shall not be held liable to any person for additional expenses that may be incurred due to delays or changes in any transport services, sickness, weather, strikes, war or other causes.
5. For other terms & conditions, refer overleaf of invoice or visit <https://ubingo.my/home/terms.php>
6. All pictures shown are for illustration purpose only.

Note: UVSB refers to UbinGO Vacations Sdn Bhd.

Japan Tours - Additional Terms & Conditions:

1. Tours are conducted in Mandarin, with simple translation in English if required.
2. For booking triple-share rooms please note that additional bed is based on "roll-away" bed.
3. Tour fare quoted is for MALAYSIAN, the non-Malaysian surcharge applied.

For Agent Use Only:

Updated Date: FEB 2025

UbinGO Vacations Sdn. Bhd.

(Formerly known as Apple Flexi Holiday Sdn. Bhd.)

2nd Floor, Bangunan WSF, 42B & 42-1B, Jalan Sultan Ismail, 50250 Kuala Lumpur, Malaysia.

Reg No. 200501002258 [679304-T] [KPK/LN No. 5187]

03-2779 6899
016-324 4899